

AFTER YOU'VE GONE

Chord progression for 'After You've Gone' (Eb pitched instruments):

Measures 1-4: Cmaj7, Cm6, F7

Measures 5-8: Gmaj7, Bm7, E7

Measures 9-12: A7, D7

Measures 13-16: G6, Dm7, G7

Measures 17-20: Cmaj7, Cm6, F7

Measures 21-24: Gmaj7, Bm7, E7

Measures 25-28: Am7, E7, Am7, Cm7, F7

Measures 29-32: Gmaj7, F#m7, B7, Em7, C#dim

Measures 33-36: G6, E7, Am7, D7

Measures 37-40: G6, Dm7, G7

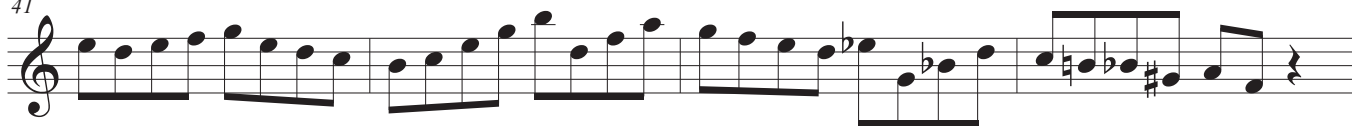
AFTER YOU'VE GONE

Cmaj7

Cm6

F7

41



Gmaj7

Bm7

E7

45



A7

D7

49



G6

Dm7

G7

53



Cmaj7

Cm6

F7

57



Gmaj7

Bm7

E7

61



Am7

E7

Am7

Cm7

F7

65



Gmaj7

F#m7

B7

Em7

C#dim

69



G6

E7

Am7

D7

73



G6

Dm7

G7

77

